

kranzle®

Quality High Pressure Cleaners



■ Made
■ in
■ Germany

www.kranzle.co.nz

15 Good reasons to invest in Kränzle

1. 30% more pressure!

Traditional high-pressure cleaners are usually equipped with an injector for induction of detergents. In order to suck in the detergents, the water which is under high pressure, needs to be pressed through a small nozzle pipe. This costs energy, no matter if the injector is in operation or not. The available working pressure is reduced by approximately 30% on other machines compared to Kränzle.

Kränzle high-pressure cleaners with water tanks are designed such as to allow the pump to suck up water from the water tank as well as detergents at the same time. The energy consuming injector and the simultaneous loss of efficiency and/or pressure of up to 30% is eliminated. The detergents can be sprayed without reducing the operating pressure.

2. No pump damage to due to lack of water

The great advantage of the water tank is that cavitations (air bubble implosions inside the pump, caused mainly by lack of water). This is the major reason for failure in high pressure pumps, and is almost eliminated in Kränzle machines.

3. Distinctly longer service life!

All units are equipped with ceramic coated stainless steel pistons which are produced in an extremely expensive manufacturing process. The advantage of the steel piston, which draws the heat from the pump head, is combined with the advantage of the hard ceramic surface, which prevents the packings from wear. This serves to considerably increase the service life of our systems.

4. All systems are dry-run safe!

All systems are equipped with 2 Teflon graphite packings per piston. The excellent gliding properties of Teflon graphite serve to reduce both the friction resistance and temperatures inside the system. For this reason, the systems can be operated without water for a certain period = dry-run safety.

5. Malfunctions due to corrosion are impossible!

Because all water leading components are made of stainless steel or special brass.

6. Brass pump heads ensure a long service life!

All pump heads are by Kränzle in Germany from forged special brass to ensure a long service life.

7. No motor noise!

Most appliances are equipped with slow running, silent and durable four pole electric motors (1.400rpm).

8. Strict quality control!

All appliances are subject to exhaustive electronic and practical tests under field conditions. Every single lance and machine are checked for correct pressure and operation before the cleaners leave the factory.

9. Incredible efficiency!

The new Therm 1 versions include quite a number of improvements (amongst others, a new heating coil) helping to increase the burner capacity up to an incredible efficiency of 93%.

10. Stable water temperatures!

In addition to the traditional mode of operation, the Therm series offers the possibility to practically maintain a stable water temperature with a minimal deviation of only +/- 1°C thanks to adjustable clocking. This type of stability is unique. Traditional modes of operation are subject to temperature deviations of up to 30°C.

11. Two motors prevent wear!

All hot water systems are equipped with two motors, i.e. one motor for the high pressure pump and one motor for the fuel pump and fan, this is to prevent both fan and fuel pump from wear during cold water operation or unnecessary operation.

12. Two gauges!

All hot water systems are equipped with two gauges, i.e. one water pressure gauge and one oil pressure gauge..

13. Glycerin damped stainless steel!

All machines are equipped with large clearly arranged glycerin damped stainless steel gauges.

14. Independent operating hours counters

The Therm Series is equipped with two independent operating-hours-counters - one for the pump and the other for the burner. This facilitates to determine the respective service intervals.

15. Faster end-consumer service!

The rather extensive Kränzle programme is based on only a few types of pumps and motors. Above all, this translates into a small spare parts inventory for distributors and a faster end consumer service.

Quality German manufacturing and production!



Cold Water Machines

KHD10/122

High Pressure Cleaner

10L/min, 1740psi

- Single phase
- Stainless steel lances including 'dirtkiller' turbo lance and adjustable flat fan jet lance
- 5m power lead
- Spray gun with safety cut-out
- 10m steel fabric high pressure hose
- Continuously adjustable pressure control
- Brass pump head
- Ceramic coated pump pistons
- Dry-run safety
- Leakage return system.



■ Made
■ in
■ Germany

SILENT 122

High Pressure Cleaner

7L/min, 1740psi

- Single phase
- 10 amp plug
- Stainless steel adjustable flat fan jet lance
- Steel fabric high pressure 10m hose
- 5m power lead
- Spray gun with safety cut-out
- Continuously adjustable pressure control
- Brass pump head
- Ceramic coated pump pistons
- Dry-run safety
- Leakage return system.



Cold Water Machines

K1152TST

High Pressure Cleaner

10L/min, 1885psi

- Single phase
- Total stop system
- Stainless steel lances including 'dirtkiller' turbo lance and adjustable flat fan jet lance
- Integrated hose drum with 15m hose
- Brass pump head
- Continuously adjustable pressure control
- 5m power lead
- Cable reel
- Integrated trolley
- Spray gun with safety cut-out
- Steel fabric high pressure hose
- Ceramic coated pump pistons
- Dry-run safety
- Leakage return system.



K2160TST

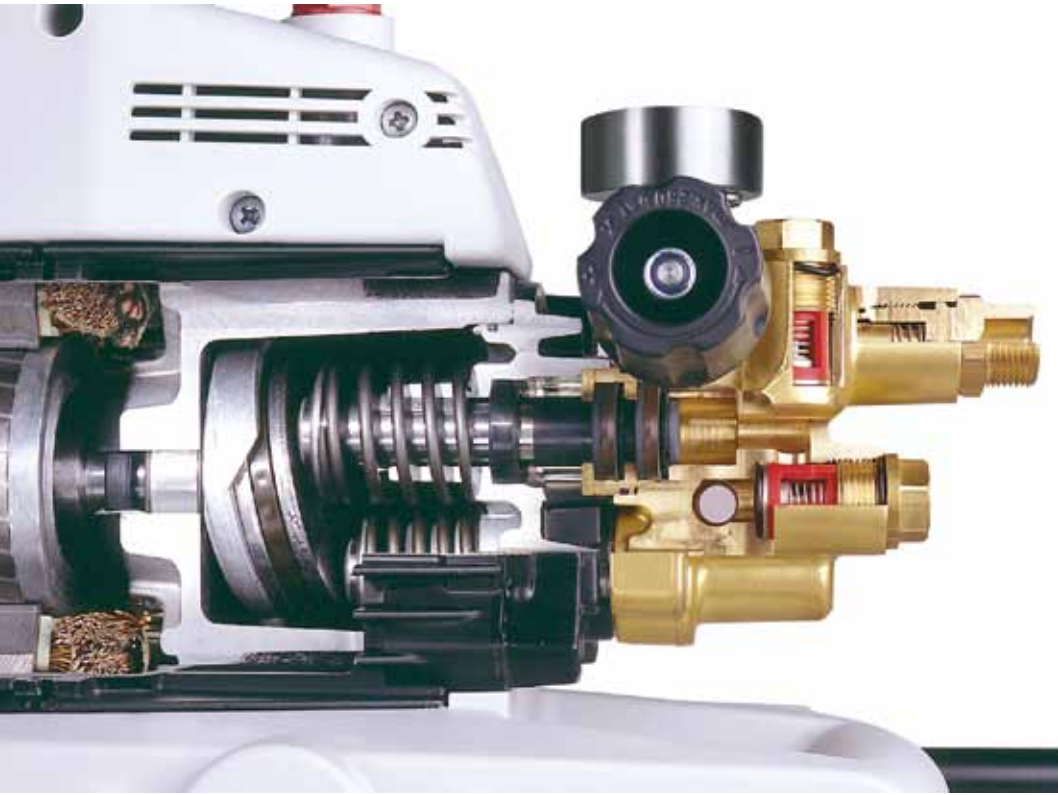
High Pressure Cleaner

11L/min, 2030psi

- Single phase
- Total-stop system
- Integrated hose drum with steel fabric high pressure 15m hose
- Stainless steel lances including 'dirtkiller' turbo lance and flat jet lance
- 5m power lead
- Cable reel
- Integrated trolley
- Built in on-board accessory storage
- Continuously adjustable pressure control
- Brass pump head
- Ceramic coated pump plungers
- Dry-run safety
- Leakage return system.



kränzle®



Dry run protection! Dry run reliability!

Teflon graphite rings run on ceramic coated plungers to lubricate them even with no water flow. This allows a Kränzle machine to survive being run dry without expensive damage - very important in case you are called away and forget to turn the machine off!



10 year guarantee on brass pump head!

Superb German engineering combined with the durability of forged special brass guarantees a corrosion free long working life!



Cold Water Machines

KQ599TST

High Pressure Cleaner

10L/min, 2175psi

- Single phase
- Total-stop function with delayed motor cut-out
- Stainless steel lances including 'dirtkiller' turbo lance and adjustable flat fan jet lance
- Steel fabric high pressure 20m hose
- 7.5m power lead
- Cable reel
- Hose drum
- Integrated trolley
- Built in water tank and on-board accessory storage
- Continuously adjustable pressure control
- Safety cut-out
- Brass pump head
- Ceramic coated pump plungers
- Dry-run safety
- Leakage return system
- High pressure detergent application.



■ Made
■ in
■ Germany

KQ799TST

High Pressure Cleaner

13L/min, 2610psi

- Three phase
- Total-stop function with delayed motor cut-out
- Hose drum
- 7.5m power lead
- Cable reel
- Steel fabric high pressure 20m hose
- Integrated trolley
- Stainless steel lances including 'dirtkiller' turbo lance and flat jet lance
- Built in water tank and on-board accessory storage
- Continuously adjustable pressure control
- Safety cut-out
- Brass pump head
- Ceramic coated pump plungers
- Dry-run safety
- Leakage return system
- High pressure detergent application.



KQ1200TST

High Pressure Cleaner

19L/min, 2610psi

- Three phase
- Total-stop function with delayed motor cut-out
- Built in water tank and on-board accessory storage
- Hose drum
- Steel fabric high pressure 20m hose
- Stainless steel lances including 'dirtkiller' turbo lance and flat jet lance
- 7.5m Power lead
- Cable reel
- Integrated trolley
- Continuously adjustable pressure and quantity control
- Safety cut-out
- Brass pump head
- Ceramic coated pump plungers
- Dry-run safety
- Leakage return system
- High pressure detergent application.



Cold Water Machines - Wall Assembly

KQ11/135

Stationary Pressure Cleaner

11L/min, 1960psi

- Stainless steel housing
- 10m Steel fabric high pressure hose
- Spray gun with safety cut-out
- Flat jet lance with stainless steel pipe
- Continuously adjustable pressure and quantity control
- Total-stop system with delayed motor cut-out
- Adjustable cut-out delay
- Brass pump head / ceramic coated pistons
- Dry run safety
- Leakage return system
- 230V single phase



kränzle®



Cold Water Machines - Petrol Engine

KB200T

High Pressure Cleaner

12.5L/min, 2610psi

- 6.5hp Honda engine
- Hose drum
- Steel fabric high pressure 20m hose
- On-board accessory storage
- Stainless steel lances including 'dirtkiller' turbo lance and flat, fan jet lance
- Continuously adjustable pressure and quantity control
- Safety cut-out
- Brass pump head
- Ceramic coated pump plungers
- Automatic throttle speed controller.

Indent
orders
only



■ Made
■ in
■ Germany

KB230T

High Pressure Cleaner

20L/min, 2900psi

- 13hp Honda engine
- Hose drum
- Steel fabric high pressure 20m hose
- On-board accessory storage
- Stainless steel lances including 'dirtkiller' turbo lance and flat, fan jet lance
- Continuously adjustable pressure and quantity control
- Safety cut-out
- Brass pump head
- Ceramic coated pump plungers
- Automatic throttle speed controller.

Indent
orders
only





Solid brass pump head

10 year guarantee on pump head!

The pump head is manufactured by Kränzle in Germany from forged special brass and guarantees an extremely long corrosion free life with a 10 year guarantee.

Slow runner

Slow running, silent and durable!

The machines (except for KHD10/122) are equipped with slow running, silent and durable quadripolar industrial quality electric motors (1400rpm).

Stainless steel plungers with ceramic coating

Excellent thermal conductivity and extremely low-wear

All units are equipped with ceramic coated stainless steel plungers. This excellent feature of stainless steel plungers include, excellent thermal conductivity, hard ceramic coating (extremely low-wear) This serves to considerably increase the service life of our systems - No cracked ceramic plungers!

Dry-run safety

Protecting the life of your machine

All pumps are equipped with a fabric sleeve and a Teflon graphite back ring. The superior gliding properties of Teflon graphite serve to reduce both the friction resistance and temperatures in the pump. As a result, the systems can be operated undamaged without water for a certain period = dry-run safety.



Non-corrosiveness and durability

Breakdowns due to corrosion are impossible!

All parts of pump and safety devices that are in contact with water are made of stainless steel or special brass.

Bypass operation

Significantly prolonged service life

All machines switch over to a low pressure bypass operation as soon as the gun is closed. The water is circulated with a residual pressure of approx. 10 bar. Machines with the additional option of total-stop switch off completely at this point. Pump and motor are shut down resulting in a significantly prolonged service life, as well as energy savings.

Continuously adjustable pressure and water control

Easy to use and easy to handle

For all machines, the operating pressure and thus the amount of water can be exactly adjusted to suit the cleaning task.



Leakage return system

Increases service life

A unique water cushion between the sealing systems of the plungers prevents any intrained air from reaching the pump gaskets. Thus the service life of plungers and pump is considerably increased.

Quality pressure gauge

Kränzle quality in every detail

All machines are equipped with a large conveniently located glycerine filled stainless steel pressure gauge.



Build Quality

Kränzle's Q.C. checks involve stringent testing of every machine!

An individual checklist is yours to see with every parameter checked before leaving the Kränzle factory. This ensures Kränzle's reliability record is kept 100% from day one.

The Pump Assembly

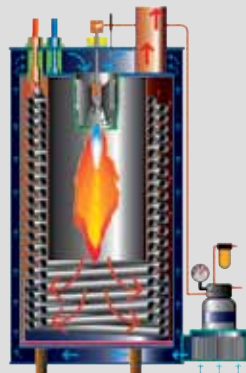
Innovation with a view to quality and long life service

While all the innovative features of the Therm pump/ inloader assembly are too numerous to cover, some of the following stand out. Patented unloader assembly ensures no load under bypass conditions, safety devices, brass pump head (10yr guarantee), stainless steel valves, ceramic pistons and much more. The use of the ultimate components produces the ultimate pump.

The Boiler Unit

Built like a German tank

The Therm Series boiler, the 'heart of any steam cleaning machine is a prime example of Kränzle quality! The boiler weighs in at just under 90kg - which is more than most machines in this class weigh in total! The boiler coils consist of 42m of pipe, 19mm OD and 2.5mm wall thickness!



kränzle®



Hose Drum Options

The accessory you have always wanted - now included!

Kränzle's hose drums include 20m of high quality steel braided hose, rotation lock and easy access. You'll wonder how you could have used a unit without this extremely practical option.

Optical Flame Monitoring

Safety device for fuel supply cut off

The oil heated Kränzle therm cleaners (except for Therm CA) are equipped with an optical flame monitoring device. A photocell is located right above the combustion chamber and connected to the central control electronics. If the photocell does not detect a flame, the fuel supply is cut off. This prevents a dangerous build up of unburnt fuel inside the burner. An error message appears in the thermostat display. (Except for Therm C)

Safety Devices

- A pressure control valve for continuously variable adjustment of water quantity and pressure. This valve also allows for pressureless bypass operation.
- A safety valve protecting the machine against excessive overpressure.
- An integrated flow monitor device switches the burner off if the water flow is too low, thus preventing the combustion chamber from overheating.
- A pressure monitoring device only allows the burner to operate if there is sufficient pressure
- An additional differential pressure switch automatically switches the machine to stand-by 30 seconds after the trigger gun is released
- A thermal overload switches off the machine in case of excessive power consumption.

Sweepers

K2+2 SWEEP

High Pressure Cleaner

- Hand powered sweeper with double roller hasp principle
- Working width, 800mm
- Counter rotating side brushes
- Storage bin and housing made of impact-proof plastic
- Extra large wheels with natural rubber tyres for optimum transmission of force
- 40L storage bin
- Feeder brushes and roller brushes made of extreme abrasion-proof nylon
- Variable height adjustable feeder brushes
- Unloading device for brushes and cleaning of evacuated air with microfilter
- Foldable handle for saving space when in storage.



■ Made
■ in
■ Germany

Wet & Dry Vacuum Cleaners

VENTOS 30E

Wet & Dry Vacuum Cleaner

- 1200W, 230V
- Ergonomically shaped carrying and push handle, retractable
- Compact yet very stable
- Onboard accessory holder
- Washable filters
- Appliance socket with power-up and cut-out delay
- Electronic suction power control with blowing function
- 7.5m rubber coated power lead with cable reel
- Big wheels with sturdy axle made of steel



Indent
orders
only

kränzle



Steam Cleaning Machines

Hot water up to 90°C. Steam up to 150°C.

CA11-130

High Pressure Steam Cleaner

11L/min, 1885psi

- Single phase
- Total-stop function with delayed motor cut-out
- 7.5m power lead
- Cable reel
- Steel fabric high pressure hose 15m, with hose drum
- Water tank and stainless steel lance
- Continuously adjustable pressure and quantity control
- Pre-aeration of combustion chamber
- 25L fuel tank with content monitoring
- Brass pump head
- Ceramic coated pump plungers
- Dry-run safety and leakage return system
- High pressure detergent application.



■ Made
■ in
■ Germany

KTH635-1

High Pressure Steam Cleaner

10.6L/min, 1885psi

- Single phase
- 7.5m power lead
- Cable reel
- Steel fabric high pressure hose 20m, with hose drum
- Water tank and stainless steel lance
- Total-stop function with delayed motor cut-out
- Continuously adjustable pressure and temperature control
- 4 Way safety system with overload protection
- Optical flame monitoring and integrated steam level
- Pre-aeration of combustion chamber
- 25L fuel tank with content monitoring
- Brass pump head
- Ceramic coated pump plungers
- Dry-run safety and leakage return system
- High pressure detergent application.



Steam Cleaning Machines

Hot water up to 90°C. Steam up to 150°C

KTH895-1

High Pressure Steam Cleaner

14.9L/min, 2830psi

- Three phase
- 7.5m power lead
- Cable reel
- Steel fabric high pressure, 20m with hose drum
- Water tank
- Stainless steel and flat jet lances with safety cut-out
- Total-stop function with delayed motor cut-out
- Continuously adjustable pressure & temperature control
- 4 Way safety system with overload protection
- Optical flame monitoring and integrated steam level
- Pre-aeration of combustion chamber
- 35L fuel tank with content monitoring
- Brass pump head
- Ceramic coated pump plungers
- Dry-run safety and leakage return system
- High pressure detergent application.



KTH1165-1

High Pressure Steam Cleaner

19.4L/min, 2390psi

- Three phase
- 7.5m power lead
- Cable reel
- Steel fabric high pressure, 20m with hose drum
- Water tank
- Stainless steel and flat jet lances with safety cut-out
- Total-stop function with delayed motor cut-out
- Continuously adjustable pressure & temperature control
- 4 Way safety system with overload protection
- Optical flame monitoring and integrated steam level
- Pre-aeration of combustion chamber
- 35L fuel tank with content monitoring
- Brass pump head
- Ceramic coated pump plungers
- Dry-run safety and leakage return system
- High pressure detergent application.



KTH871E-ST48

High Pressure Electric Steam Cleaner

14.5L/min, 2465psi

- Three phase
- 7.5m power lead
- Cable reel
- Water tank
- Stainless steel and flat jet lances with safety cut-out
- Total-stop function with delayed motor cut-out
- Continuously adjustable pressure & temperature control
- 4 way safety system with overload protection
- Pre-aeration of combustion chamber
- Brass pump head
- Ceramic coated pump plungers
- Dry-run safety and leakage return system
- High pressure detergent application.



Indent orders only

Cleaning Accessories



Hand Gun - 360mm

410531

To suit models: KHD10/122, SILENT122, K1152TST, K2160TST, KQ599TST, KQ799TST.



Heavy Duty Gun - 360mm

123202

To suit all models.



Standard Spray Lance

123925-M20

400mm Lance c/w Knife Jet Nozzle

To suit models: KQ599TST, KQ799TST.

12392-D250

600mm Lance c/w Fan Jet Nozzle

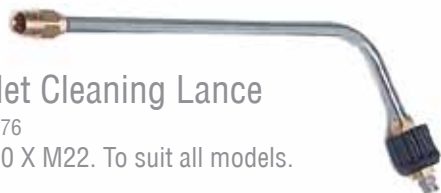
To suit models: KQ1200TST, KTH635-1 & KTH895-1



Lance Extension

41154

1000mm ST 30 x M22. To suit all models.



Toilet Cleaning Lance

41076

ST 30 X M22. To suit all models.



Underbody Lance

41075

800mm extension To suit all models



Dirt Killer Nozzles

035 x 1/4" Female

410734 To suit models: KHD10/122, SILENT122

045 x 1/4" Female

410713 To suit models: K1152TST, K2160TST, KQ799TST, KQ599TST

055 x 1/4" Female

410714 To suit model: CA11/130

Turbo Killer Nozzles

045 x 1/4" Female

410718 To suit models: K1152TST, KQ799TST, KB200T, CA11/130, KTH895-1.

07 x 1/4" Female

410715 To suit models: KB230T, KTH1165-1

055 x 1/4" Female.

410712 To suit model: KQ1200TST



Vario Jet Nozzle

045 x 1/4" Female.

41155 To suit models: K1152TST, KHD10/122



Dirt Killer Lances Complete

035 Complete - 500mm

410722 To suit model: KHD10/122, SILENT122

045 Complete - 500mm

410725 To suit models: K1152TST, KQ599TST, KQ799TST, CA11/130, K2160TST

Turbo Killer Lances Complete

045 Complete - 500mm

410723 To suit models: KQ799TST, KTH895-1, KB200T

055 Complete - 600mm

410724 To suit model: KQ1200TST

07 Complete - 600mm

410727 To suit models: KB230T, KTH1165-1

Vario Jet Lances Complete

042 Complete - 400mm

41156 To suit model: K1152TST, KHD10/122

055 Complete - 400mm

411561 To suit model: CA11/130



Round Floor Cleaners

UFO Round Floor Cleaner

41850 To suit models: KHD10/122, SILENT122, K1152TST, K2160TST, KQ599TST

300 Round Floor Cleaner

41105 To suit models: KHD10/122, K1152TST, K2160TST, KQ599TST (indent orders only)

420 Round Floor Cleaner

41106 To suit all models. (indent orders only)

520 Round Floor Cleaner

41107 To suit all models. (indent orders only)

Water Filter 3/4"

13300 Male / Female

133001 Male / Female union nut

Suits all models



Detergent Injector Kit

133761

Detergent injector as an accessory for Kranzle cleaners with petrol engines.

To suit models: KHD10/122, SILENT122



Rotary Wash Brush

410501

ST30 Nipple M22

Suits all models



Flat Floor Cleaner

410931

045 Complete

To suit models: KHD10/122, K1152TST, K2160TST, KQ599TST, KQ799TST, KB200T, CA11/130, KTH635-1, KTH895-1



Sandblast Accessory Kit

41068

19L/min, 250b

To suit all models.



Sludge Sucker

41104

To suit all models.



Cleaning Accessories

3m Suction Hose

450383

Comes with filter.
To suit all models.



Pipe Cleaning Hose

Comes with Nozzle

41058 15m

410582 20m

410583 30m

To suit all models



Steel Wire Braided Hose

High pressure, 3/8" F/F.

10m, 210bar

43416 To suit: KHD10/122, Silent 122

15m, 210bar

48015 To suit: K1152TST, K2160TST

20m, 210bar

434161 To suit: KQ599TST, KQ795TST, KQ1200TS

10m, 230bar

44878 To suit: CA11/130

20m, 400bar

41083 To suit: KTH635-1, KTH895-1, KTH1165-1



Steam Cleaning Machines

	Thermal Industrial Models - Diesel Heated				Stationary Wall Mounted
Model:	CA11/130	KTH635-1	KTH895-1	KTH1165-1	KTH871E-ST48
Phase:	Single Phase	Single Phase	Three Phase	Three Phase	Single Phase
kW:	2.3	2.3	5.5	5.5	3.2
RPM	1400	1400	1400	1400	1400
Litre/min:	11	10.6	14.9	19.4	14.5
Operating/max. pressure (psi):	1885/2100	1885/1200	2830/3120	2390/2610	2465 (max)
Total Stop:	yes + delay	yes + delay	yes+ delay	yes+ delay	yes
Water Tank:	yes	yes	no	no	no
kg:	171	200	220	220	85
Hose:	15m drum	20m drum	20m drum	20m drum	10m
Detergent Injector:	hp	hp	hp	hp	no
Size (mm):	860 x 600 x 980	800 x 1200 x 1050	1050 x 800 x 1000	1050 x 800 x 1000	780 x 700 x 360



www.kranzle.co.nz

0800 387 678

Vacuums

	Wet & Dry Industrial
Model:	VENTOS 30E
Phase:	Single Phase
Watts:	1200
Suction:	20,000pa
Litre/min:	3200
Hose:	36mm x 3.5m
Level:	73dB(A)
kg:	9.3
Size (mm):	380 x 485 x 550

Sweepers

	Push-along machine
Model:	K2+2
Width:	800mm
Storage:	40L
kg:	16

Cold Water Machines

	Compact, light commercial models			Commercial/Industrial	Heavy Duty/Industrial			Honda powered models	
Model:	KHD10/122	SILENT122	K1152TST	K2160TST	KQ599TST	KQ799TST	KQ1200TST	KB200T	KB230T
Phase:	Single Phase	Single Phase	Single Phase	Single Phase	Single Phase	Three Phase	Three Phase	Petrol	Petrol
kW:	2.5	2.5	2.76	3.3	3.2	3.5	4.9	HP: 6.5	11
RPM:	2800	2800	2800	1400	1400	1400	1400	-	-
Litre/min:	10	7	10	11	10	13	19	12.5	20
Operating/max. pressure (psi):	1740/1960	1740/1960	1885/2175	2030/2320	2175/2390	2610/2900	2610/2900	2610/2900	2900/3335
Total Stop:	no	no	yes	yes	yes + delay	yes + delay	yes + delay	optional speed control	speed control
Water Tank:	no	no	no	yes	yes	yes	yes	no	no
kg:	18.5	26	27	41	60	60	89	63	89
Hose:	10m	10m	15m drum	15m drum	20m drum	20m drum	20m drum	20m drum	20m drum
Detergent Injector:	optional	optional	yes	hp	hp	hp	hp	yes	yes
Size (mm):	440 x 200 x 330	300 x 330 x 800	300 x 300 x 800	335 x 375 x 980	790 x 395 x 870	780 x 395 x 870	770 x 570 x 990	750 x 570 x 960	720 x 570 x 960