

## SUNFLAG TRIM CLIP REMOVAL SET 2 PIECE CT610

Great for small clips that break easily. Special hardened steel blade. 2 sizes 7mm & 9mm width.



Made in Japan  
**\$35+ GST**

## ENDEAVOUR TOOLS MAGNETIC OIL DRAIN ET9866

Sick of getting hot oil spilt on your arm? This universal tool makes easy work of draining oil.



**\$29+GST**

## MERCEDES WHEEL NUT SOCKET ETK17M

Specialty wheel nut socket for Mercedes Benz. Makes removing those wheel nuts a breeze.



**\$28+GST**

## 4 STROKE LEAK DOWN TESTER ET1053A

A great tool for checking leakage, postrings, head gaskets, intake/exhaust valves in 4 stroke engines. Requires air source of 70-160PSI, as unit will pressurise system to 60PSI. Spark plug thread hoses, 10, 12, 14mm, regulators and orings.



**\$179+GST**

## ENDEAVOUR 5 PC 1/2" THIN WALL SOCKET SET ETK5

With protective sleeves & plastic inserts to prevent scratching of wheels and lug nuts.. Hollow design allows room for removing longer bolts. Heavy duty chrome molybdenum. Incl 17mm 19mm 21mm 22mm & 27mm sizes



**\$59+GST**

## SUMP PLUG TOOL WITH 3 SUMP PLUGS (ET1604CBOEM Equiv: 06L-103-801)



**\$39+GST**

## REPLACEMENT SUMP PLUGS (10 PK) ET1604C OEM Equiv: 06L-103-801



**\$33.60+GST**

## HCB TOOLS 13 Pce 1/2" Specialist Socket Set - ET2465

A range of specialist sockets for a variety of applications and vehicles, including clutch, brakes, fuel pump, transmission, half axles, cylinder head, balance shaft screw and head bolts.



**\$165+GST**

## WHEEL LOCK NUT KEYS VW TOUAREG / PORSCHE ET6058 OEM Equiv: T10190 Spline set



**\$265+GST**

## H.C.B-C1552 VW/ AUDI 7-SPEED DSG GEARBOX MECHATRONIC UNIT LEVER

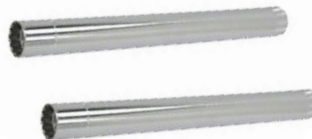
Used to operate the engaging lever during dismantling and mounting of the mechatronic unit on 7-speed dual clutch gearbox 0AM.



**\$126+GST**

## ENDEAVOUR TOOLS MAGNETIC SPARK PLUG SOCKET ET1194 01+02 Pair of Sockets

250mm shaft in 14mm (Euro21mm) and 16mm (Euro23mm) for deep seated Spark Plugs.



**\$46+GST  
for the pair**

## CROWSFOOT INJECTOR WRENCH SET 14MM,17MM, 19MM 12 POINT 1/2'SQUARE DRIVE ET 5060-04-05-06



Open end crow's foot socket set for servicing common rail injection lines.

**\$79.85+GST  
For a set of 3**

## ENDEAVOUR BLACK SNAKE 1/2" COMPACT IMPACT WRENCH RMAX-IMPA

Even Smaller  
New & Improved  
Model



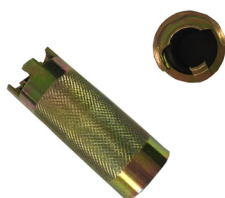
Amazing power with a 1275Nm Breakaway Torque. Just 1.34kg! compact portable and easy to use. Working torque 25- 500 ft lb (34-678Nm) 24 month Warranty

**\$239+GST**

## ENDEAVOUR VAG LOCK CYLINDER INSTALLATION TOOL ET0720

Locking cylinder installation aid for key pattern with internal spring. For fast and precise repairs to the door lock.

Suitable for: VW Passat, Vento, Beetle, Lupo, Golf IV (not Golf Cabrio!) Seat Skoda



**\$28+GST**

## H.C.B BENZ DIESEL PRE-CHAMBER RETAINER RING REMOVAL SOCKET (DR.1/2" X 58 TEETH) HCB-A1702



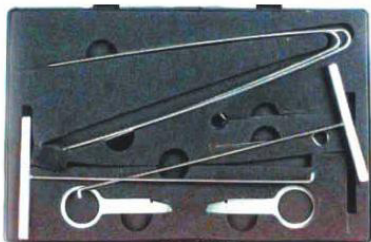
Used for removing pre-chamber retainer ring on indirect injection diesel engines. Application Mercedes diesel engines Spline with 28mm outside diameter

**\$68+GST**

## MERCEDES BENZ DASHBOARD SERVICE KIT H.C.B A2003

\*Kit includes ignition lock remover, radio set remover, & instrument cluster removing hooks.

\*N.W.:0.2KG



**\$59+GST**

## ENDEAVOUR MINI PANEL REMOVAL SET DA5215



Great for removing small or fine facia trim and bezels from dashboards, air vents, door panels and much more. Made from impact resistant high quality nylon.

**\$29+GST**